

减速机性能资料 / GEAR BOX PERFORMANCE INFORMATION

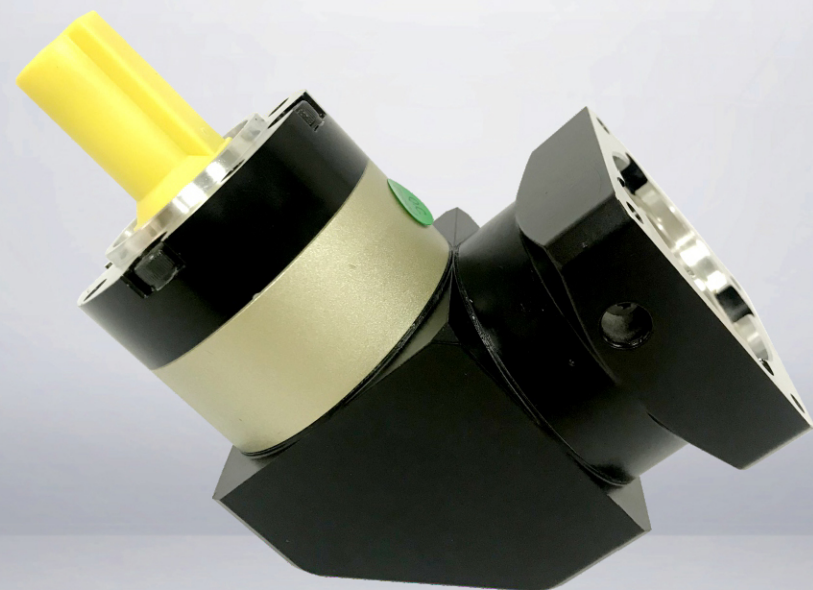
规格 Specifications	单位 unit	节数 Stage	减速比 Ratio	PGCR 060	PGCR 090	PGCR 120
额定输出转矩 T2N Nominal Output Torque	N.m	1	3	32.6	95.2	283
			4	30.1	74.6	249
			5	32.3	95.2	283
			7	30.9	85.6	219
			10	25.0	75.0	210
		2	12	32.6	95.2	283
			15	32.6	95.2	283
			20	30.1	74.6	249
			25	32.3	95.2	283
			30	32.3	95.2	283
			35	32.3	95.2	283
			40	32.3	95.2	283
			50	32.3	95.2	283
			70	30.9	85.0	219
100	25.0	75.0	210			
急停力矩 T2NOT Emergency Stop Torque	N.m	1、2	3 ~ 100	3倍额定输出力矩 (3.0 times of Nominal Output Torque)		
额定输入转速 n1 Nominal Input Speed	rpm	1、2	3 ~ 100	3000	3000	2500
最大输入转速 n1max Max. Input Speed	rpm	1、2	3 ~ 100	6000	6000	5000
超精密背隙 P0 Ultraprecise Backlash	arcmin	1	3 ~ 10	-	-	≤ 3
		2	12 ~ 100	-	-	≤ 5
精密背隙 P1 Precise Backlash	arcmin	1	3 ~ 10	-	-	≤ 6
		2	12 ~ 100	-	-	≤ 9
标准背隙 P2 Standard Backlash	arcmin	1	3 ~ 10	≤ 12	≤ 9	≤ 7
		2	12 ~ 100	≤ 15	≤ 12	≤ 9
扭转刚性 Torsional Rigidity	N.m / arcmin	1、2	3 ~ 100	2.6	7.5	15.5
容许径向力 F2rB Max. Radial Load	N	1、2	3 ~ 100	889	1630	3380
容许轴向力 F2aB Max. Axial Load	N	1、2	3 ~ 100	850	1420	2930
使用温度 Operating Temp	° C	1、2	3 ~ 100	-10° C ~ +90° C		
使用寿命 Service Life	hr	1、2	3 ~ 100	20,000 (10,000/连续运转 continuous operation)		
效率 η Efficiency	%	1	3 ~ 10	≥ 96%		
		2	12 ~ 100	≥ 92%		
重量 Weight	kg	1	3 ~ 10	1.3	3.0	7.3
		2	12 ~ 100	2.0	5.0	11.5
安装方向 mounting Position	-	1、2	3 ~ 100	任意方向 Any direction		
噪音值 Noise Level	dB(A)/1m	1、2	3 ~ 100	60	65	65
防护等级 Protection Class	-	1、2	3 ~ 100	Ip65		
润滑 Lubrication	-	1、2	3 ~ 100	全合成润滑脂油 Synthetic Lubricant		

减速机转动惯量

规格 Specifications	单位 unit	节数 Stage	减速比 Ratio	PGCR 060	PGCR 090	PGCR 120
转动惯量 J1 Inertia	kg.cm ²	1	3	0.25	0.81	2.2
			4	0.18	0.65	1.8
			5	0.16	0.62	1.61
			7	0.14	0.60	1.55
			10	0.14	0.60	1.53
		2	12	0.16	0.62	1.61
			15	0.16	0.62	1.61
			20	0.16	0.62	1.61
			25	0.16	0.62	1.61
			30	0.14	0.60	1.55
			35	0.14	0.60	1.55
			40	0.14	0.60	1.55
			50	0.14	0.60	1.55
			70	0.14	0.60	1.53
100	0.14	0.60	1.53			



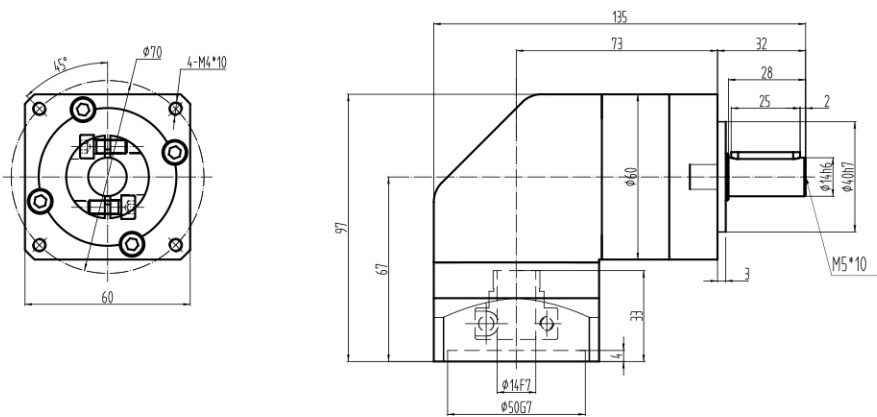
PGCR 直齿转角系列



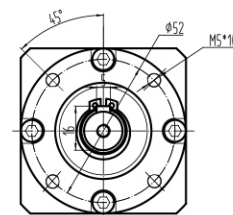
外形尺寸图表 / OUTLINE DIMENSION SHEET

PGCR 60-L1

输出端/OUTPUT

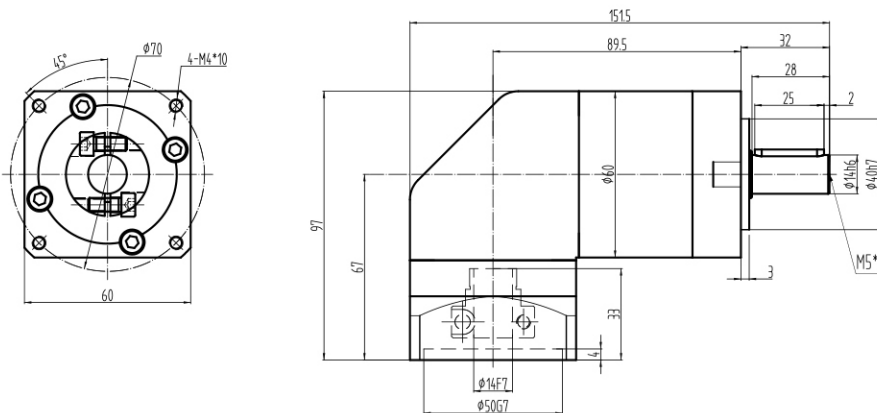


输入端/INPUT

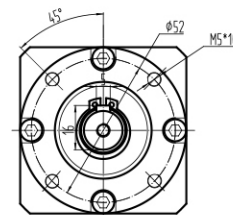


PGCR 60-L2

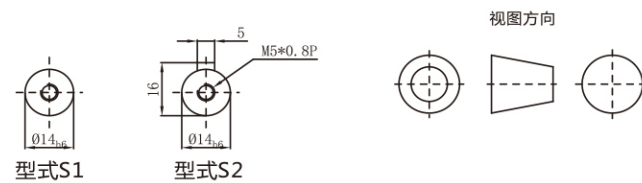
输出端/OUTPUT



输入端/INPUT



输出轴径/Output Diameter



*输入马达连接板之尺寸, 可根据客户要求单独定做。
*The input motor specific dimensions could be customised.

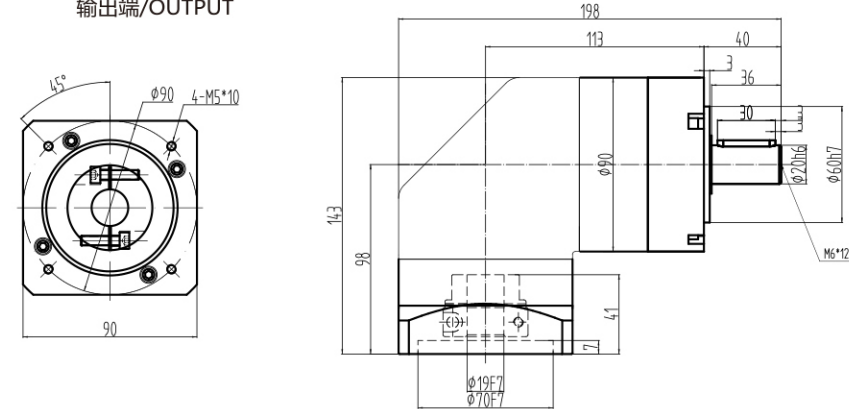
尺寸	C1	C2	C3	C4	C5	C6	C7	C8	C9	C10
PGCR60-L1	φ46	4-M4x10	≤ φ8	34	φ30	5	60	81	116	9
	φ66.7	4-M4x10	≤ φ8	34	φ38.1	5	60	81	116	8
PGCR60-L2	φ70	4-M4x10,4-M5x12	≤ φ14	34	φ50	5	60	81	116	9
	φ46	4-M4x10	≤ φ8	34	φ30	5	60	137.5	172.5	9
	φ66.7	4-M4x10	≤ φ8	34	φ38.1	5	60	137.5	172.5	8
	φ70	4-M4x10,4-M5x12	≤ φ14	34	φ50	5	60	137.5	172.5	9

* C1~C10是公制标准马达连接板之尺寸,可根据客户要求单独定做。
* C1~C10are motor (metric standard) specific dimensions, which could be customised.

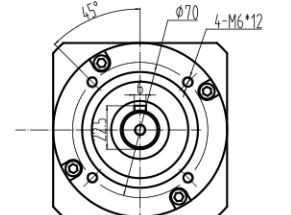
外形尺寸图表 / OUTLINE DIMENSION SHEET

PGCR 90-L1

输出端/OUTPUT

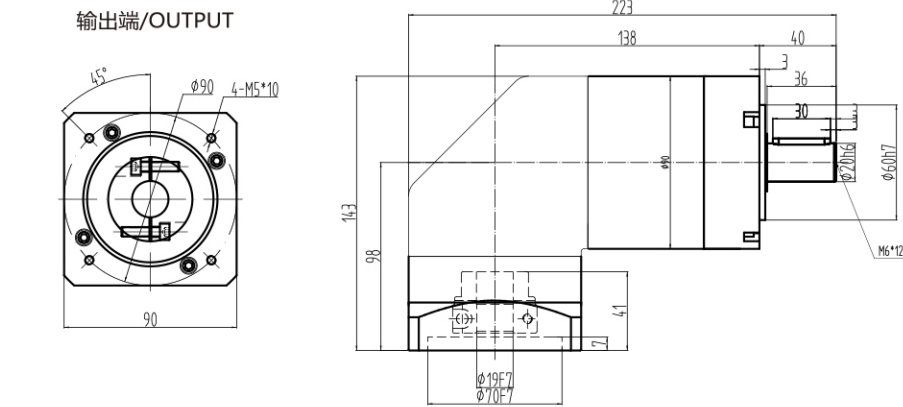


输入端/INPUT

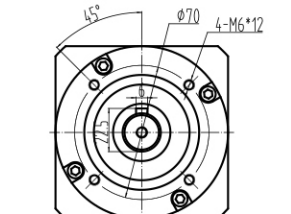


PGCR 90-L2

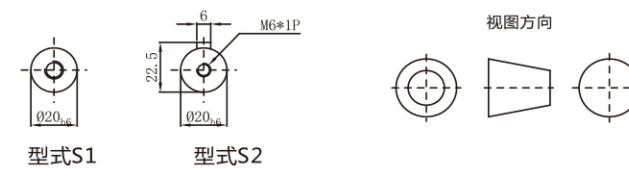
输出端/OUTPUT



输入端/INPUT



输出轴径/Output Diameter



*输入马达连接板之尺寸, 可根据客户要求单独定做。
*The input motor specific dimensions could be customised.

尺寸	C1	C2	C3	C4	C5	C6	C7	C8	C9	C10
PGCR90-L1	φ70	4-M4x12,4-M5x12	≤ φ14	46	φ50	4	90	100	140	6
	φ75	4-M4x12,4-M5x12	≤ φ14	46	φ60	5.5	90	100	140	6
	φ90	4-M5x15,4-M6x15	≤ φ19	46	φ70	7	90	100	140	7
	φ100	4-M6x15	≤ φ19	46	φ80	7	90	100	140	7
	φ115	4-M8x20	≤ φ24	61.5	φ95	10	100	100	140	12.5
PGCR90-L2	φ70	4-M4x12,4-M5x12	≤ φ14	46	φ50	4	90	119	159	6
	φ75	4-M4x12,4-M5x12	≤ φ14	46	φ60	5.5	90	119	159	6
	φ90	4-M5x15,4-M6x15	≤ φ19	46	φ70	7	90	119	159	7
	φ100	4-M6x15	≤ φ19	46	φ80	7	90	119	159	7
	φ115	4-M8x20	≤ φ24	61.5	φ95	10	100	119	159	12.5
	φ145	4-M8x20	≤ φ24	61.5	φ110	10	130	119	159	12.5

* C1~C10是公制标准马达连接板之尺寸,可根据客户要求单独定做。
* C1~C10are motor (metric standard) specific dimensions, which could be customised.