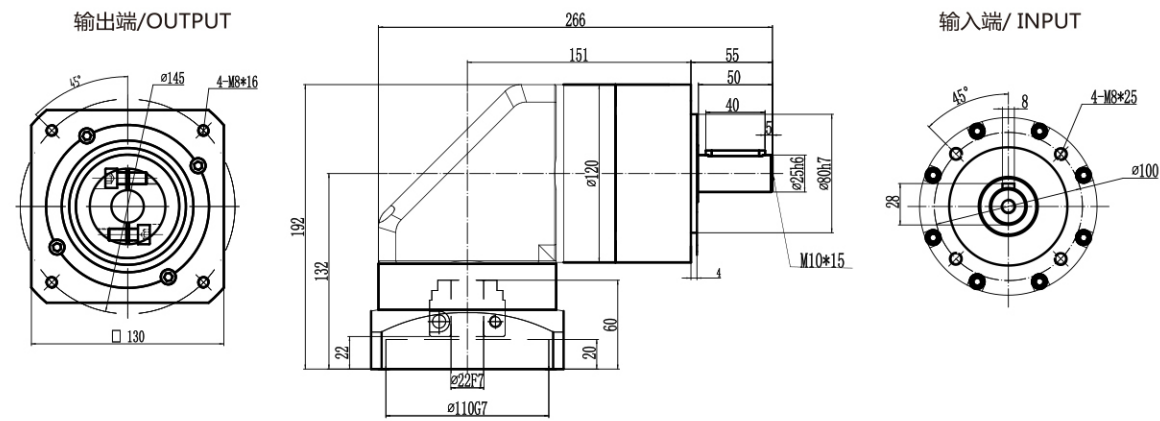
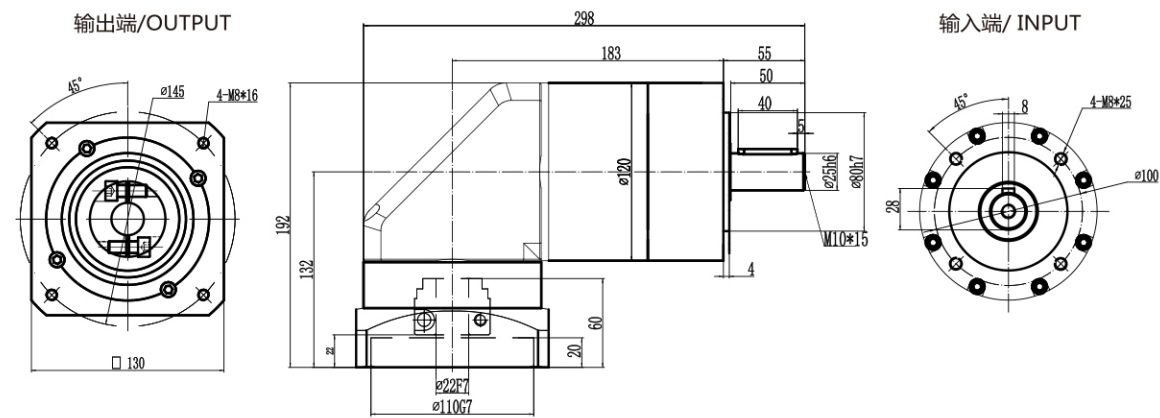


外形尺寸图表 / OUTLINE DIMENSION SHEET

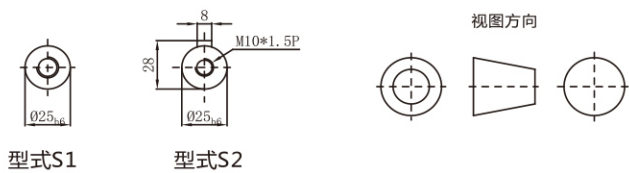
PGCR120-L1



PGCR120-L2



输出轴径/Output Diameter



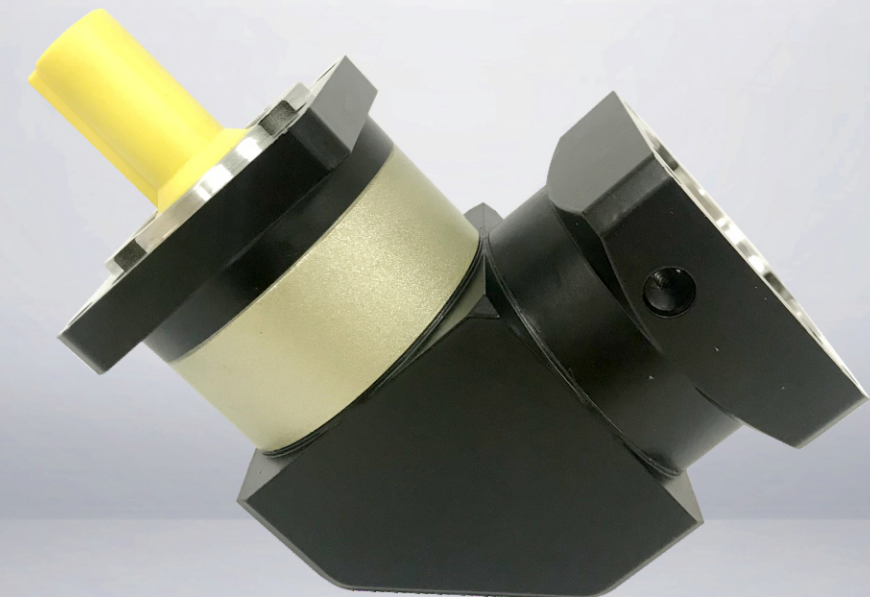
*输入马达连接板之尺寸, 可根据客户要求单独定做。
*The input motor specific dimensions could be customised.

尺寸	C1	C2	C3	C4	C5	C6	C7	C8	C9	C10
PGCR120-L1	φ 90	4-M5x15,4-M6x15	≤ φ 19	48.5	φ 70	7	115	153	208	7
	φ 100	4-M6x15	≤ φ 19	48.5	φ 80	7	115	153	2	7
	φ 115	4-M8x20	≤ φ 24	58	φ 95	10	115	153	208	11.5
	φ 145	4-M8x20	≤ φ 24	59	φ 110	10	130	153	2	12.5
	φ 145	4-M8x20	≤ φ 24	68	φ 110	10	130	162	217	21.5
PGCR120-L2	φ 90	4-M5x15,4-M6x15	≤ φ 19	48.5	φ 70	7	115	180	2	7
	φ 100	4-M6x15	≤ φ 19	48.5	φ 80	7	115	180	235	7
	φ 115	4-M8x20	≤ φ 24	58	φ 95	10	115	180	235	11.5
	φ 145	4-M8x20	≤ φ 24	59	φ 110	10	130	180	235	12.5
	φ 145	4-M8x20	≤ φ 24	68	φ 110	10	130	189	244	21.5

* C1~C10是公制标准马达连接板之尺寸, 可根据客户要求单独定做。
* C1~C10are motor (metric standard) specific dimensions, which could be customised.



PGER 直齿转角系列



减速机性能资料 / GEAR BOX PERFORMANCE INFORMATION

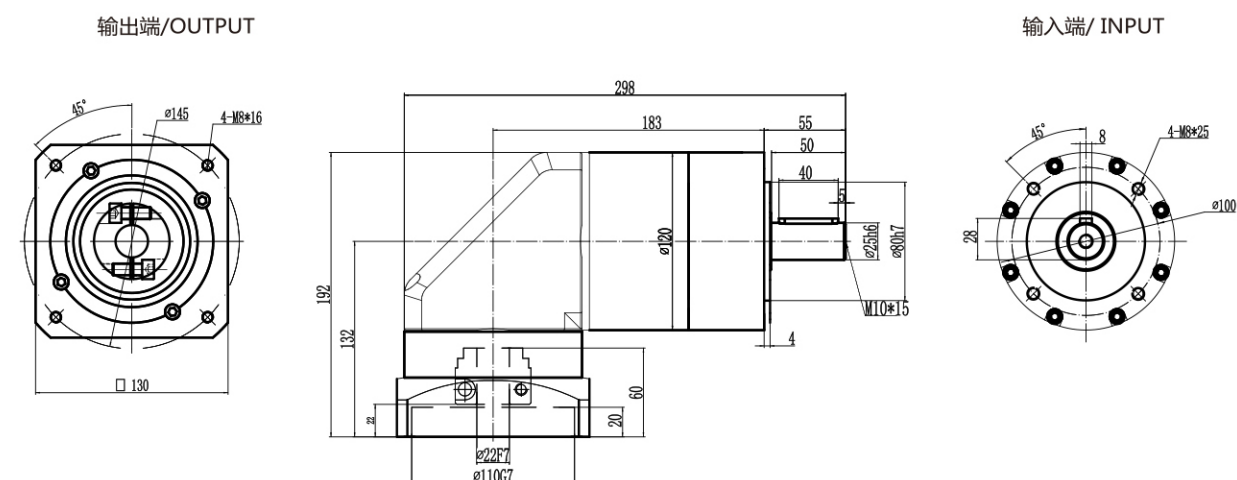
规格Specifications	单位unit	节数Stage	减速比Ratio	PGER 060	PGER 090	PGER 120
额定输出力矩T2N Nominal Output Torque	N.m	1	3	32.6	95.2	283
			4	30.1	74.6	249
			5	32.3	95.2	283
			7	30.9	85.6	219
			10	25.0	75.0	210
		2	12	32.6	95.2	283
			15	32.6	95.2	283
			20	30.1	74.6	249
			25	32.3	95.2	283
			30	32.3	95.2	283
			35	32.3	95.2	283
			40	32.3	95.2	283
			50	32.3	95.2	283
			70	30.9	85.0	219
100	25.0	75.0	210			
急停力矩T2NOT Emergency Stop Torque	N.m	1、2	3 ~ 100	3倍额定输出力矩 (3.0 times of Nominal Output Torque)		
额定输入转速n1 Nominal Input Speed	rpm	1、2	3 ~ 100	3000	3000	2500
最大输入转速n1max Max.Input Speed	rpm	1、2	3 ~ 100	6000	6000	5000
超精密背隙P0 Ultraprecise Backlash	arcmin	1	3 ~ 10	-	-	≤ 3
		2	12 ~ 100	-	-	≤ 5
精密背隙P1 Precise Backlash	arcmin	1	3 ~ 10	-	-	≤ 6
		2	12 ~ 100	-	-	≤ 7
标准背隙P2 Standard Backlash	arcmin	1	3 ~ 10	≤ 12	≤ 9	≤ 7
		2	12 ~ 100	≤ 15	≤ 12	≤ 9
扭转刚性 Torsional Rigidity	N.m /arcmin	1、2	3 ~ 100	2.6	7.5	15.5
容许径向力F2rB Max.Radial Load	N	1、2	3 ~ 100	889	1630	3380
容许轴向力F2aB Max.Axial Load	N	1、2	3 ~ 100	850	1420	2930
使用温度 Operating Temp	° C	1、2	3 ~ 100	-10° C ~ +90° C		
使用寿命 Service Life	hr	1、2	3 ~ 100	20,000 (10,000/连续运转continui operating)		
效率η Efficiency	%	1	3 ~ 10	≥ 96%		
		2	12 ~ 100	≥ 92%		
重量 Weight	kg	1	3 ~ 10	1.3	3.0	7.3
		2	12 ~ 100	2.0	5.0	11.5
安装方向 mounting Position	-	1、2	3 ~ 100	任意方向 Any direction		
噪音值 Noise Level	dBA/1m	1、2	3 ~ 100	60	65	65
防护等级 Protection Class	-	1、2	3 ~ 100	Ip65		
润滑 Lubrication	-	1、2	3 ~ 100	全合成润滑脂油 Synthetic Lubricant		

减速机转动惯量

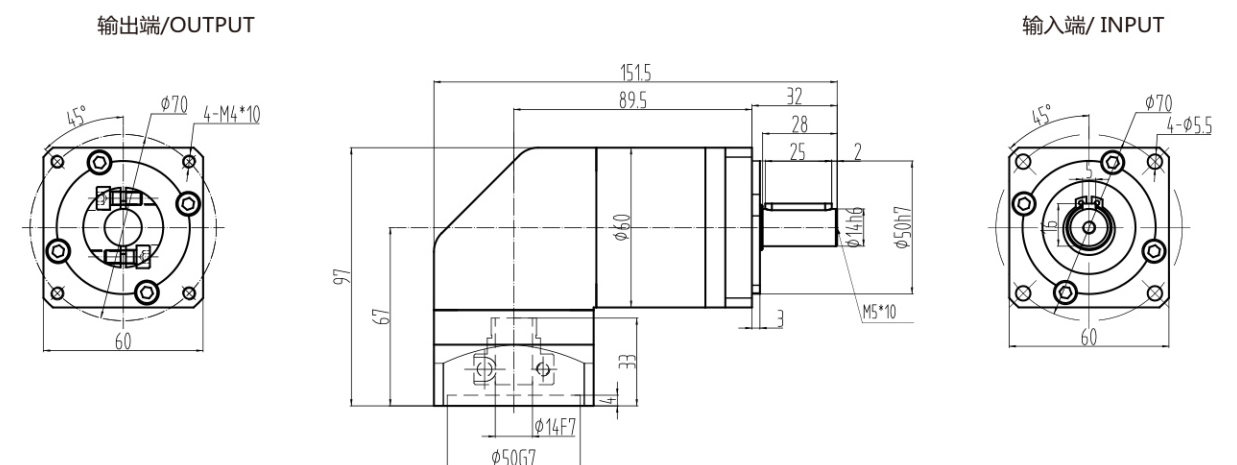
规格Specifications	单位unit	节数Stage	减速比Ratio	PGER 060	PGER 090	PGER 120
转动惯量J1 Inertia	kg.cm ²	1	3	0.25	0.81	2.2
			4	0.18	0.65	1.8
			5	0.16	0.62	1.61
			7	0.14	0.60	1.55
			10	0.14	0.60	1.53
		2	12	0.16	0.62	1.61
			15	0.16	0.62	1.61
			20	0.16	0.62	1.61
			25	0.16	0.62	1.61
			30	0.14	0.60	1.55
			35	0.14	0.60	1.55
			40	0.14	0.60	1.55
			50	0.14	0.60	1.55
			70	0.14	0.60	1.53
100	0.14	0.60	1.53			

外形尺寸图表 / OUTLINE DIMENSION SHEET

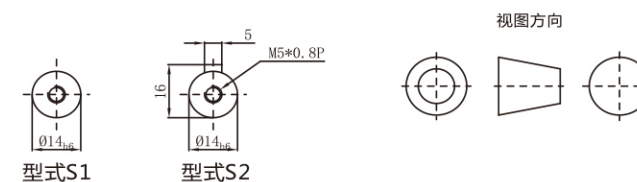
PGER 60-L1



PGER 60-L2



输出轴径/Output Diameter



*输入马达连接板之尺寸,可根据客户要求单独定做。
*The input motor specific dimensions could be customised.

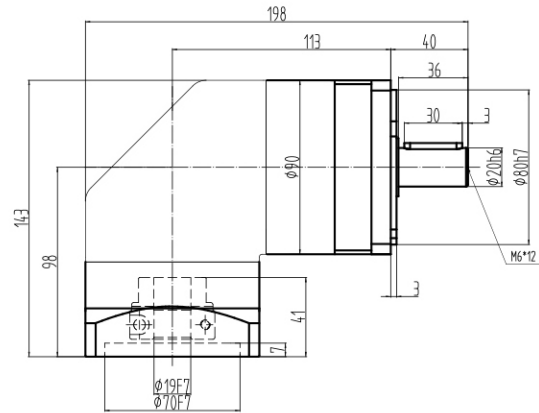
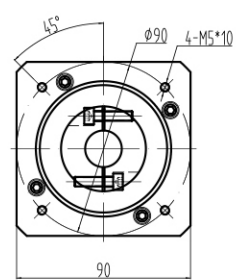
尺寸	C1	C2	C3	C4	C5	C6	C7	C8	C9	C10
PGER60-L1	φ46	4-M4x10	≤ φ8	34	φ30	5	60	81	116	9
	φ66.7	4-M4x10	≤ φ8	34	φ38.1	5	60	81	116	8
PGER60-L2	φ70	4-M4x10,4-M5x12	≤ φ14	34	φ50	5	60	81	116	9
	φ46	4-M4x10	≤ φ8	34	φ30	5	60	137.5	172.5	9
	φ66.7	4-M4x10	≤ φ8	34	φ38.1	5	60	137.5	172.5	8
	φ70	4-M4x10,4-M5x12	≤ φ14	34	φ50	5	60	137.5	172.5	9

* C1~C10是公制标准马达连接板之尺寸,可根据客户要求单独定做。
* C1~C10are motor (metric standard) specific dimensions, which could be customised.

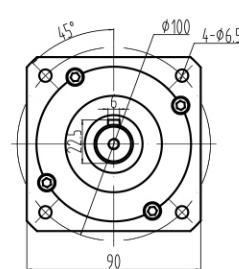
外形尺寸图表 / OUTLINE DIMENSION SHEET

PGER 90-L1

输出端/OUTPUT

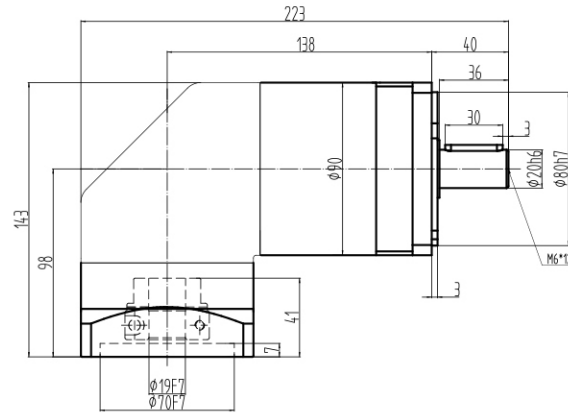
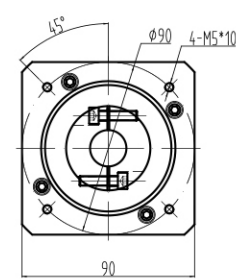


输入端/INPUT

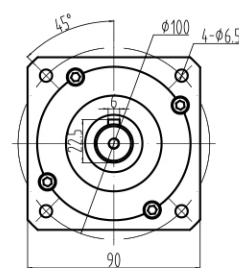


PGER 90-L2

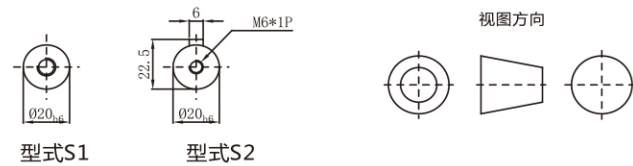
输出端/OUTPUT



输入端/INPUT



输出轴径/Output Diameter



*输入马达连接板之尺寸, 可根据客户要求单独定做。
*The input motor specific dimensions could be customised.

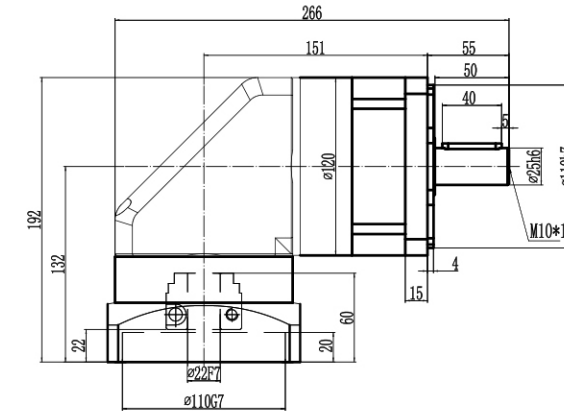
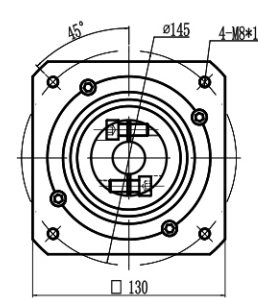
尺寸	C1	C2	C3	C4	C5	C6	C7	C8	C9	C10
PGER90-L1	φ 70	4-M4x12,4-M5x12	≤ φ 14	46	φ 50	4	90	100	140	6
	φ 75	4-M4x12,4-M5x12	≤ φ 14	46	φ 60	5.5	90	100	140	6
	φ 90	4-M5x15,4-M6x15	≤ φ 19	46	φ 70	7	90	100	140	7
	φ 100	4-M6x15	≤ φ 19	46	φ 80	7	90	100	140	7
	φ 115	4-M8x20	≤ φ 24	61.5	φ 95	10	100	100	140	12.5
PGER90-L2	φ 70	4-M4x12,4-M5x12	≤ φ 14	46	φ 50	4	90	119	159	6
	φ 75	4-M4x12,4-M5x12	≤ φ 14	46	φ 60	5.5	90	119	159	6
	φ 90	4-M5x15,4-M6x15	≤ φ 19	46	φ 70	7	90	119	159	7
	φ 100	4-M6x15	≤ φ 19	46	φ 80	7	90	119	159	7
	φ 115	4-M8x20	≤ φ 24	61.5	φ 95	10	100	119	159	12.5
φ 145	4-M8x20	≤ φ 24	61.5	φ 110	10	130	119	159	12.5	

* C1~C10是公制标准马达连接板之尺寸,可根据客户要求单独定做。
* C1~C10are motor (metric standard) specific dimensions, which could be customised.

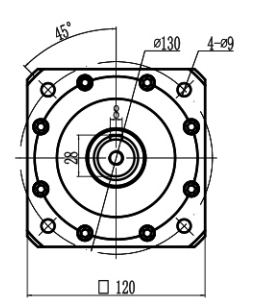
外形尺寸图表 / OUTLINE DIMENSION SHEET

PGER 120-L1

输出端/OUTPUT

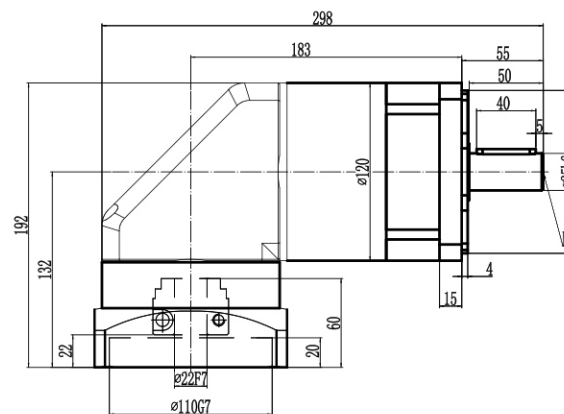
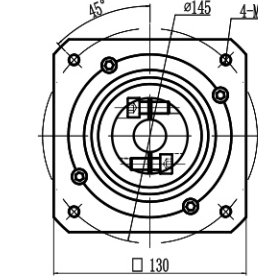


输入端/INPUT

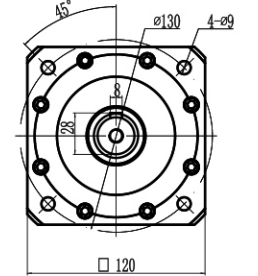


PGER 120-L2

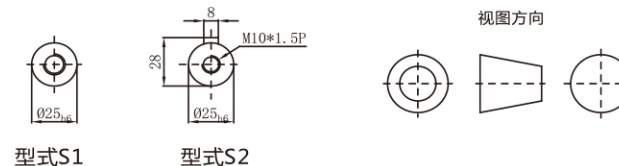
输出端/OUTPUT



输入端/INPUT



输出轴径/Output Diameter



*输入马达连接板之尺寸, 可根据客户要求单独定做。
*The input motor specific dimensions could be customised.


尺寸	C1	C2	C3	C4	C5	C6	C7	C8	C9	C10
PGER120-L1	φ 90	4-M5x15,4-M6x15	≤ φ 19	48.5	φ 70	7	115	153	208	7
	φ 100	4-M6x15	≤ φ 19	48.5	φ 80	7	115	153	2	7
	φ 115	4-M8x20	≤ φ 24	58	φ 95	10	115	153	208	11.5
	φ 145	4-M8x20	≤ φ 24	59	φ 110	10	130	153	2	12.5
	φ 145	4-M8x20	≤ φ 24	68	φ 110	10	130	162	217	21.5
PGER120-L2	φ 90	4-M5x15,4-M6x15	≤ φ 19	48.5	φ 70	7	115	180	2	7
	φ 100	4-M6x15	≤ φ 19	48.5	φ 80	7	115	180	235	7
	φ 115	4-M8x20	≤ φ 24	58	φ 95	10	115	180	235	11.5
	φ 145	4-M8x20	≤ φ 24	59	φ 110	10	130	180	235	12.5
	φ 145	4-M8x20	≤ φ 24	68	φ 110	10	130	189	244	21.5

* C1~C10是公制标准马达连接板之尺寸,可根据客户要求单独定做。
* C1~C10are motor (metric standard) specific dimensions, which could be customised.

行星减速机马达安装说明书 / PLANETARY GEARBOX WITH MOTOR MOUNTING INSTRUCTIONS

For General Type

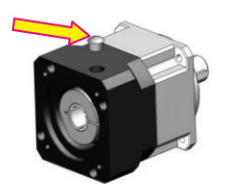
1



先确认马达减速机规格是否正确，并将马达与减速机安装面擦拭干净。

Check the motor and gearbox size. Clean the mounting surface.

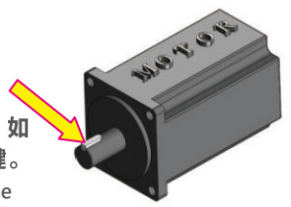
2



将连接板上扣式塞头取下，转动马达锁紧环，直到锁紧环螺丝对准塞头孔。

Take off the plug from the bracket. Revolve the set collar until the bolt is aligned with the hole.

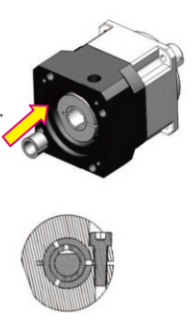
3



取下马达上原先的键，如有必要，请安装平衡键。

Remove the key from the motor shaft. Mounting the balance key if necessary.

4



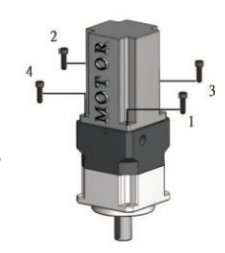
确认马达轴心尺寸，轴心太小选用适当衬套。

Make sure the motor shaft size. Choose the right bushing if necessary.

当马达为平轴状，对准衬套夹缝在平轴中心线，使锁紧环螺丝与平轴面呈垂直。

As installing on flattened shaft, be sure to align the collet gap over the flat and the set collar bolt perpendicular to the flat.

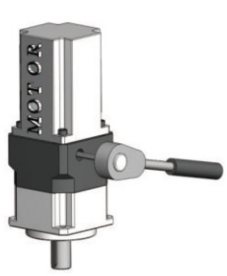
5



以锁紧扭力表建议扭力值5%，依照1至4顺序，将螺丝轻轻锁上。

Tighten the mounting bolts in 1~4 order with torque wrench to 5% specified torque.

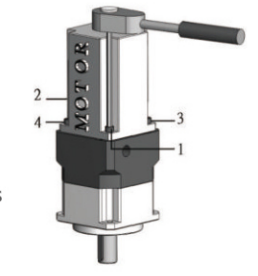
6



将马达与减速机直立摆设，参照锁紧扭力表建议之扭力值，以扭力扳手将马达锁紧环螺丝锁紧。

Install gearbox and motor vertically. Tighten the set collar bolt with torque wrench to specified torque.

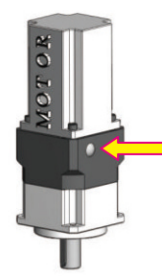
7



以锁紧扭力表建议之扭力值，依照1至4顺序，用扭力扳手将螺丝锁紧。

Tighten the mounting bolts in 1~4 order with torque wrench to specified torque.

8



将扣式塞头装回。

Put the plug back.

行星减速机输入端配电机尺寸表 / DIMENSION TABLE OF MOTOR AT INPUT END OF PLANETARY REDUCER

减速机框号	配电机端口尺寸							减速机框号	配电机端口尺寸						
	D轴	E止口	距PCD	B孔	C框	F止口高度	I轴长		D轴	E止口	距PCD	B孔	C框	F止口高度	I轴长
60型减速机								142/160型减速机							
T1	11	50	70	M4	60	3	30	T1	42	114.3	200	M12	180	3.2	79
T2	11	50	70	M5	60	3	30	T2	35	114.3	200	M12	180	3.2	113
T3	14	50	70	M4	60	3	30	T3	42	114.3	200	M12	180	3.2	113
T4	14	50	70	M5	60	3	30	T4	24	110	145	M8	130	6	65
T5	8	38.1	66.7	M4	57	3	30	T5	19	110	145	M8	130	6	55
T6	8	38.1	66.7	M5	57	3	30	T6	22	110	145	M8	130	6	55
T7	6.35	38.1	66.7	M4	57	3	30	T7	24	110	145	M8	130	6	55
T8	19	70	90	M6	80	3	55	T8	35	114.3	200	M12	180	3.2	79
T9	19	70	90	M5	80	3	55	T9	19	110	145	M8	130	6	65
T10	8	36	70.7	M4	60	3	30	T10	22	110	145	M8	130	6	65
								T11	24	110	145	M8	130	6	65
80/90型减速机								T12	28	110	145	M8	130	6	65
T1	19	70	90	M5	80	3	40	T13	28	114.3	200	M12	180	3.2	79
T2	19	80	100	M5	80	3	40	T14	32	130	165	M10	155	3.5	65
T3	19	70	90	M6	80	3	40	T15	32	114.3	200	M10	180	3.5	79
T4	16	80	100	M5	80	3	40	T16	24	110	130	M8	130	6	79
T5	14	73	98.9	M5	90	3	40	T17	38	180	215	M12	190	6	79
T6	14	50	70	M4	60	3	30	T18	28	130	165	M10	150	6	65
T7	24	110	145	M8	130	6	55								
T8	22	110	145	M8	130	6	55	180型减速机							
T9	16	80	100	M6	80	3	40	T1	42	114.3	200	M12	180	3.2	79
T10	19	95	115	M8	100	6	55	T2	35	114.3	200	M12	180	3.2	113
T11	19	95	130	M8	110	6	55	T3	42	114.3	200	M12	180	3.2	113
T12	19	110	145	M8	130	6	55	T4	55	180	215	M12	190	3.2	113
T13	19	110	145	M8	130	6	65	T5	55	200	230	M12	220	3.2	113
T14	22	110	145	M8	130	6	65	T6	42	180	215	M12	190	3.2	79
T15	24	110	145	M8	130	6	65	T7	24	110	145	M8	130	6	65
T16	14	50	70	M5	60	3	30	T8	35	114.3	200	M12	180	3.2	79
T17	22	95	115	M8	110	6	55	T9	38	180	215	M12	190	6	113
T18	24	95	115	M8	110	6	55	T10	22	110	145	M8	130	6	55
T19	19	95	115	M6	100	6	55	T11	42	180	215	M12	190	3.2	113
T20	24	95	115	M6	100	6	55	T12	38	180	215	M12	190	3.2	113
T21	19	80	100	M6	90	6	55	T13	42	200	235	M12	200	3.2	113
								T14	42	180	215	M12	190	3.2	83
115/120型减速机															
T1	19	70	90	M6	80	3	40								
T2	19	80	100	M6	80	3	40								
T3	19	95	115	M8	100	6	55								
T4	19	95	130	M8	110	6	55								
T5	19	110	145	M8	130	6	55								
T6	22	110	145	M8	130	6	55								
T7	24	110	145	M8	130	6	55								
T8	35	114.3	200	M12	180	3.2	79								
T9	19	110	145	M8	130	6	65								
T10	22	110	145	M8	130	6	65								
T11	24	110	145	M8	130	6	65								
T12	28	110	145	M8	130	6	65								
T13	22	95	115	M8	100	6	55								
T14	24	95	115	M8	100	6	55								
T15	28	110	145	M8	130	6	55								
T16	24	130	165	M10	142	6	65								
T17	24	95	115	M6	100	6	55								
T18	32	130	165	M10	142	6	65								
T22	19	55.52	125.9	M8	115	3	55								