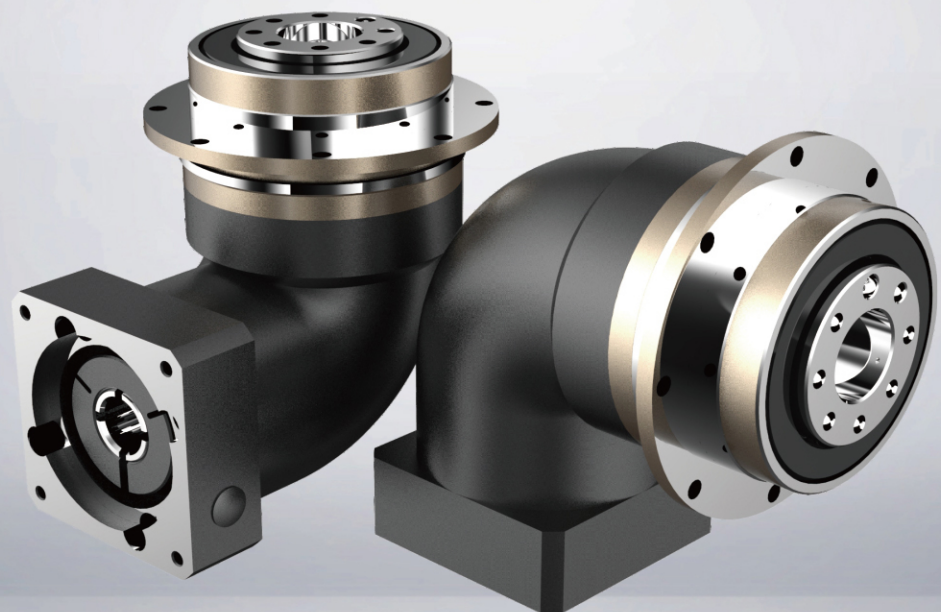




# PGFR(盘式斜齿输出转角)系列



## 减速机性能资料 / GEAR BOX PERFORMANCE INFORMATION

规格Specifications	单位unit	带数Stage	减速比Ratio	PGFR047	PGFR064	PGFR090	PGFR110	PGFR140	PGFR200	PGFR255
额定输出力矩T2N Nominal Output Torque	N.m	1	4	21	50	142	285	582	1145	1650
			5	25	66	176	335	600	1220	1700
			7	21	54	145	310	540	1120	1500
			8	21	50	142	285	582	1145	1650
			10	25	66	176	335	600	1220	1700
			14	21	54	145	310	540	1120	1500
			20	16	45	122	250	500	620	1250
		2	16	21	50	142	285	582	1145	1650
			20	21	50	142	285	582	1145	1650
			25	25	66	176	335	600	1220	1700
			35	25	66	176	335	600	1220	1700
			40	21	50	142	285	582	1145	1650
			50	25	66	176	335	600	1220	1700
			70	25	66	176	335	600	1220	1500
80	21	50	142	285	582	1145	1650			
100	25	66	176	335	600	620	1250			
急停力矩T2NOT Emergency Stop Torque	N.m	1、2	4~100	3倍额定输出力矩 (3.0 times of Nominal Output Torque)						
额定输入转速n1 Nominal Input Speed	rpm	1、2	4~100	5000	5000	5000	4000	3000	3000	2000
最大输入转速n1max Max.Input Speed	rpm	1、2	4~100	10000	10000	10000	8000	6000	6000	4000
超精密背隙P0 Ultraprecise Backlash	arcmin	1	4~10	≤5	≤5	≤5	≤5	≤5	≤5	≤5
		2	16~100	≤8	≤8	≤8	≤8	≤8	≤8	≤8
精密背隙P1 Precise Backlash	arcmin	1	4~10	≤7	≤7	≤7	≤7	≤7	≤7	≤7
		2	16~100	≤10	≤10	≤10	≤10	≤10	≤10	≤10
标准背隙P2 Standard Backlash	arcmin	1	4~10	≤9	≤9	≤9	≤9	≤9	≤9	≤9
		2	16~100	≤12	≤12	≤12	≤12	≤12	≤12	≤12
扭转刚性 Torsional Rigidity	N.m /arcmin	1、2	4~100	6	11	30	84	150	435	1006
最大弯曲力矩M2kB Max.Radial Load	N	1、2	4~100	40	120	241	417	1320	3200	5900
容许轴向力F2aB Max.Axial Load	N	1、2	4~100	960	1800	2000	4550	6110	5300	10600
使用温度 Operating Temp	° C	1、2	4~100	-10° C ~ +90° C						
使用寿命 Service Life	hr	1、2	4~100	20000 (10000/连续运转)						
效率η Efficiency	%	1	4~10	≥95%						
		2	16~100	≥92%						
重量 Weight	kg	1	4~10	1.0	1.6	3.5	7.8	15.0	45.5	68.7
		2	16~100	1.3	2.2	4.8	9.5	19.1	40.8	72.6
安装方向 mounting Position		1、2	3~100	任意方向 Any direction						
噪音值 Noise Level	dB(A)/1m	1、2	3~100	63	63	68	70	70	72	75
防护等级 Protection Class		1、2	3~100	Ip65						
润滑 Lubrication		1、2	3~100	全合成润滑脂油 Synthetic Lubricant						

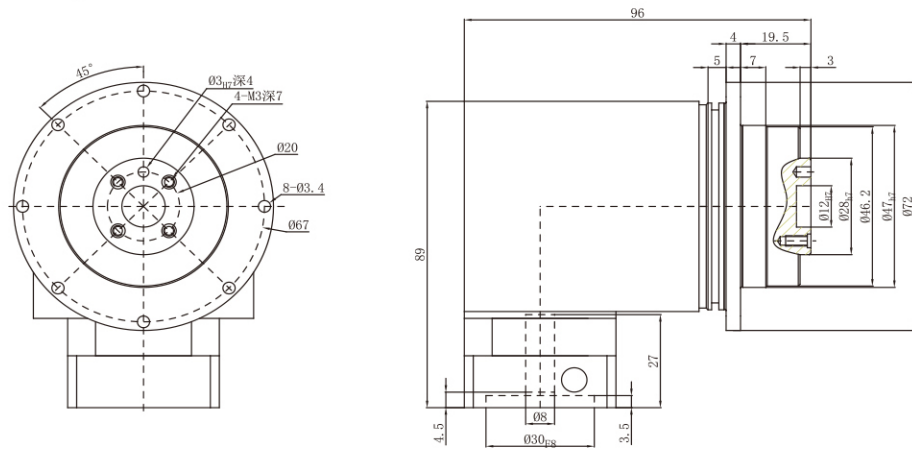
### 减速机转动惯量

规格Specifications	单位unit	带数Stage	减速比Ratio	PGFR047	PGFR064	PGFR090	PGFR110	PGFR140	PGFR200	PGFR255
转动惯量J1 Inertia	kg.cm2	1	4		0.18	0.67	1.66	7.17	24.92	58.30
			5		0.17	0.65	1.50	6.52	23.42	53.30
			7		0.14	0.60	1.45	6.17	22.64	51.02
			8/10/14/20		0.14	0.58	1.41	6.10	22.64	50.96
		2	16/20/25		0.18	0.18	0.65	2.80	7.56	23.22
			35/40		0.14	0.14	0.60	2.59	7.56	23.22
			50/70/80/100		0.14	0.14	0.58	2.54	7.06	22.51

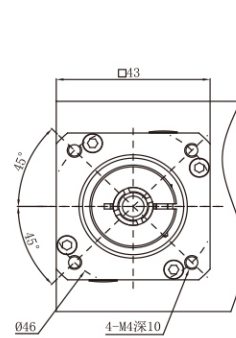
外形尺寸图表 / OUTLINE DIMENSION SHEET

PGFR 047-L1

输出端/OUTPUT

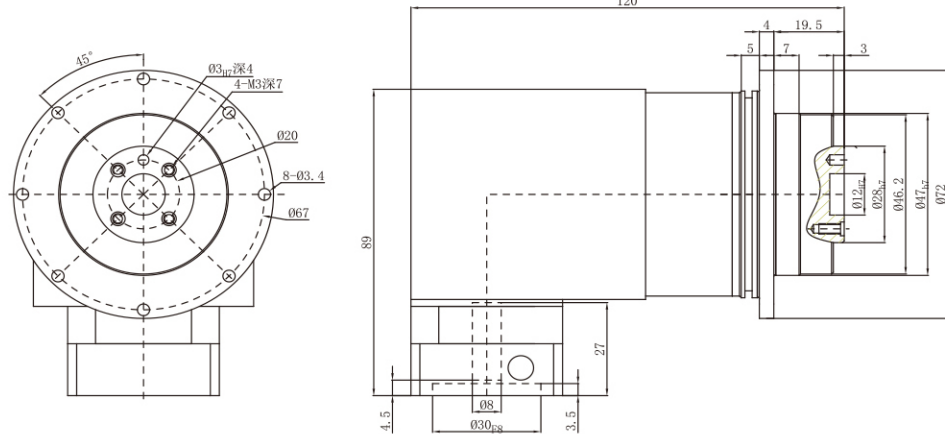


输入端/ INPUT

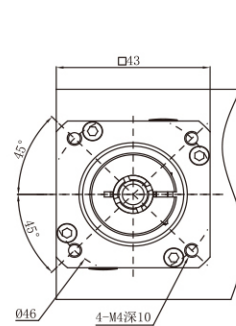


PGFR 047-L2

输出端/OUTPUT



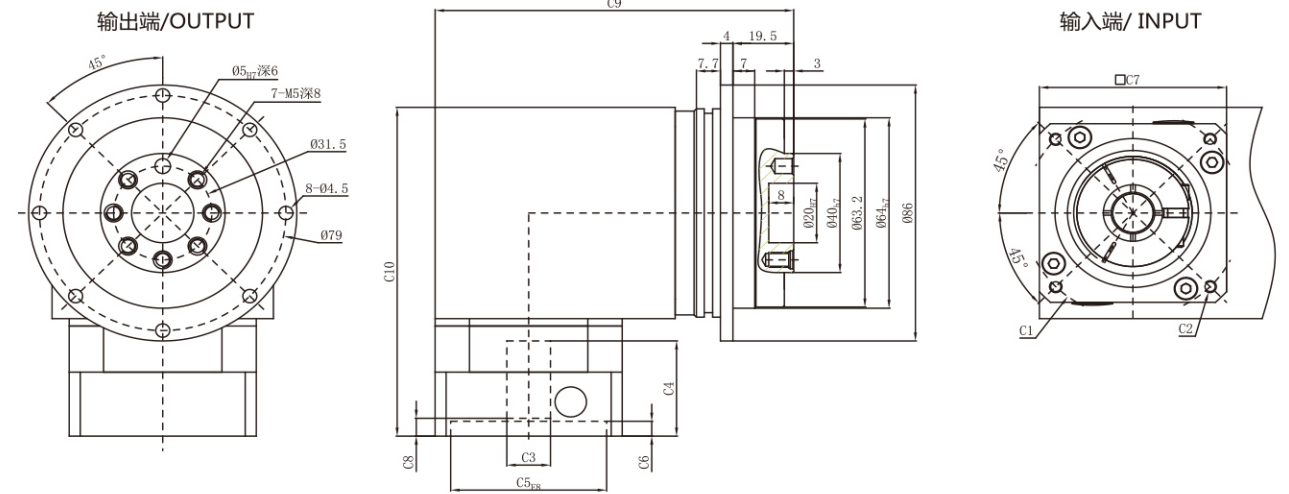
输入端/ INPUT



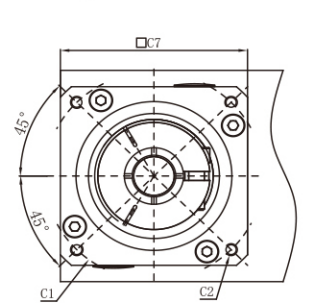
外形尺寸图表 / OUTLINE DIMENSION SHEET

PGFR 064-L1

输出端/OUTPUT

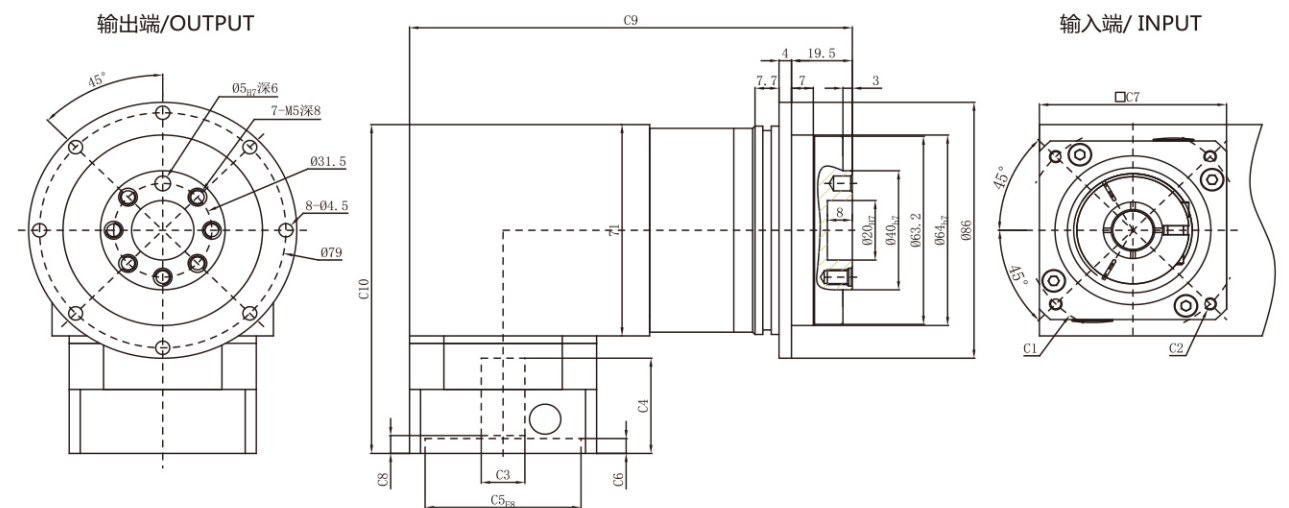


输入端/ INPUT

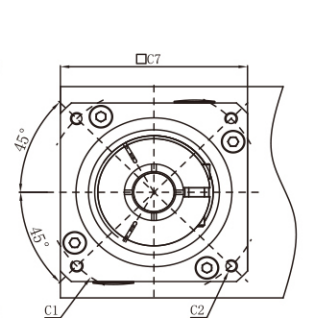


PGFR 064-L2

输出端/OUTPUT



输入端/ INPUT

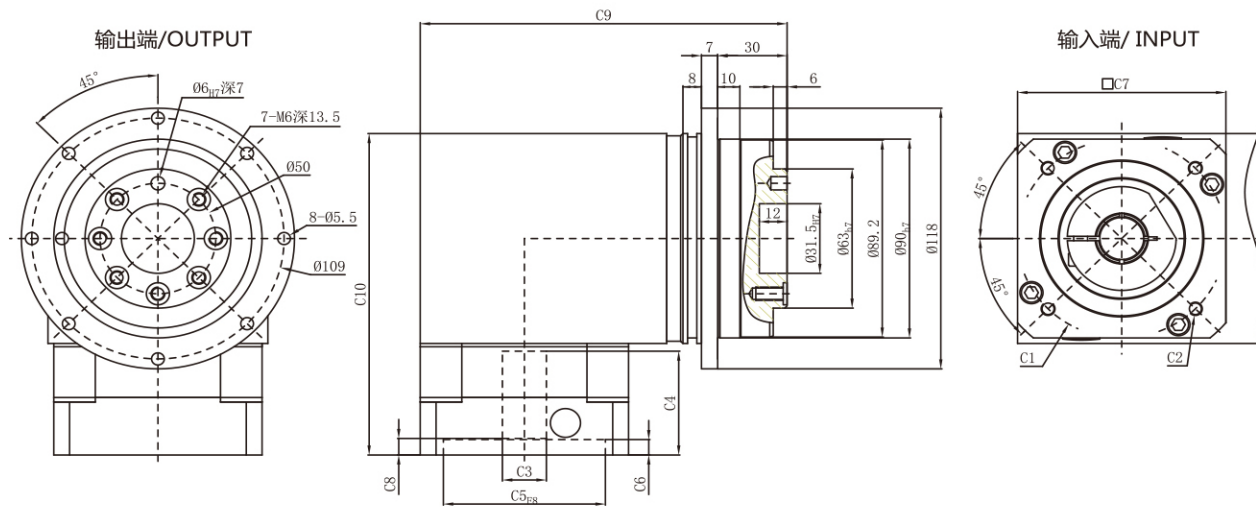


尺寸	C1	C2	C3	C4	C5	C6	C7	C8	C9	C10
PGFR064-L1	φ 46	4-M4x12,4-M5x12	≤ φ 8	37.5	φ 30	10.5	60	11.5	115	116
	φ 66.7	4-M4x12	≤ φ 8	32	φ 38.1	5	60	6	115	110.5
	φ 70	4-M4x10,4-M5x12	≤ φ 14	32	φ 50	5	60	6	115	110.5
	φ 75	4-M4x12,4-M5x12	≤ φ 14	32	φ 60	5	66	6	118	110.5
PGFR064-L2	φ 46	4-M4x12,4-M5x12	≤ φ 8	37.5	φ 30	10.5	60	11.5	142	116
	φ 66.7	4-M4x12	≤ φ 8	32	φ 38.1	5	60	6	142	110.5
	φ 70	4-M4x10,4-M5x12	≤ φ 14	32	φ 50	5	60	6	142	110.5
	φ 75	4-M4x12,4-M5x12	≤ φ 14	32	φ 60	5	66	6	145	110.5

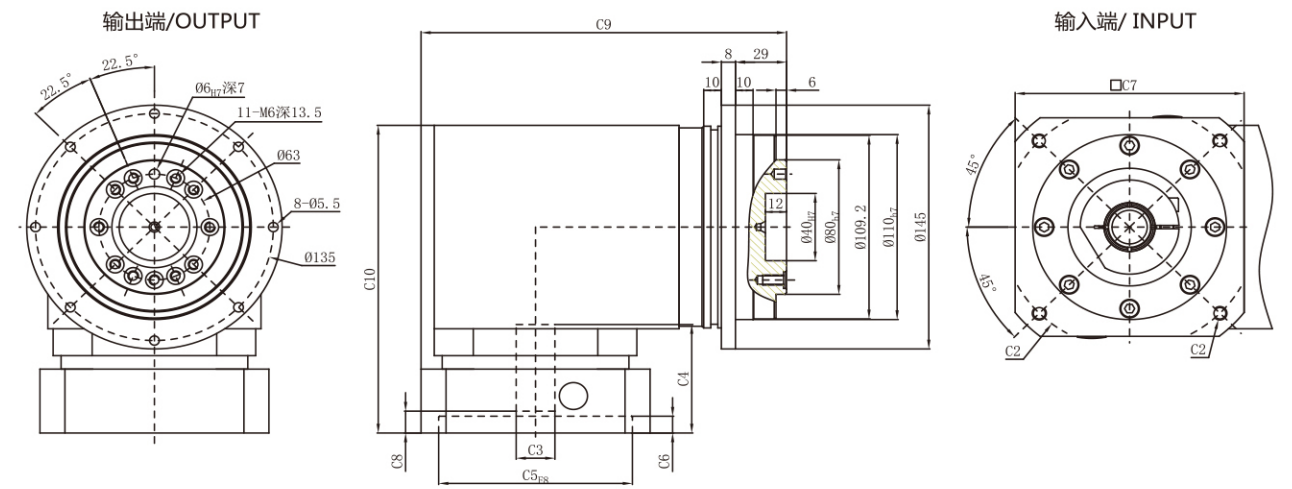
\* C1~C10是公制标准马达连接板之尺寸,可根据客户要求单独定做。  
\* C1~C10are motor (metric standard) specific dimensions, which could be customised.

外形尺寸图表 / OUTLINE DIMENSION SHEET

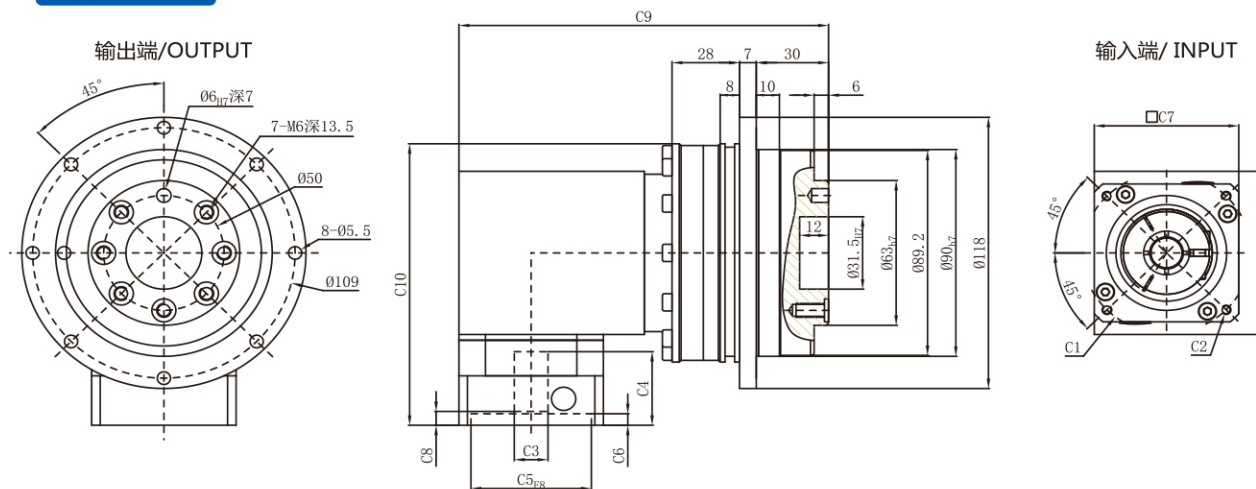
PGFR090-L1



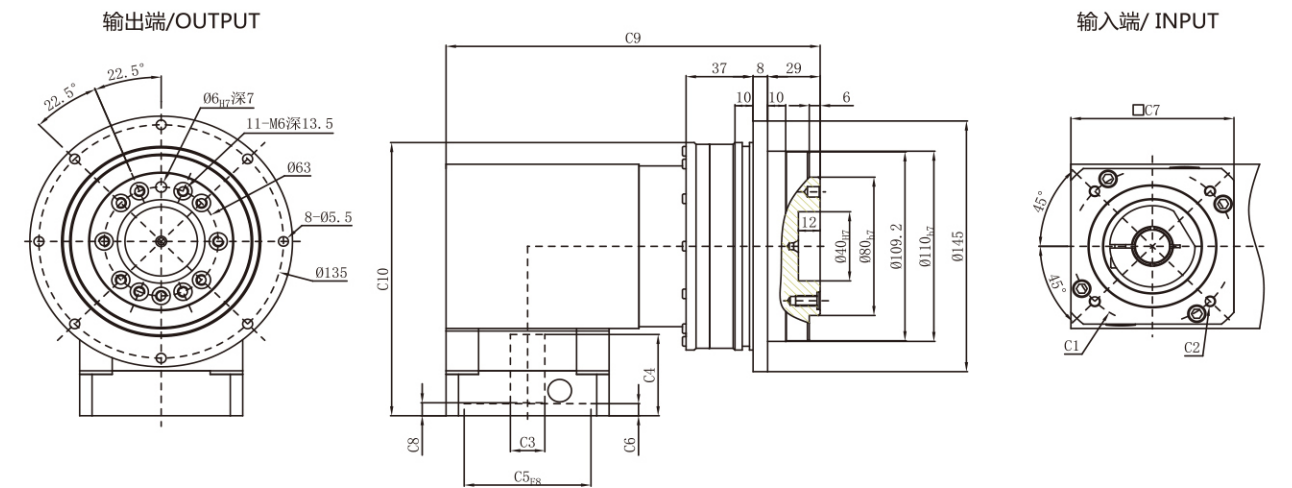
PGFR 110-L1



PGFR090-L2



PGFR 110-L2

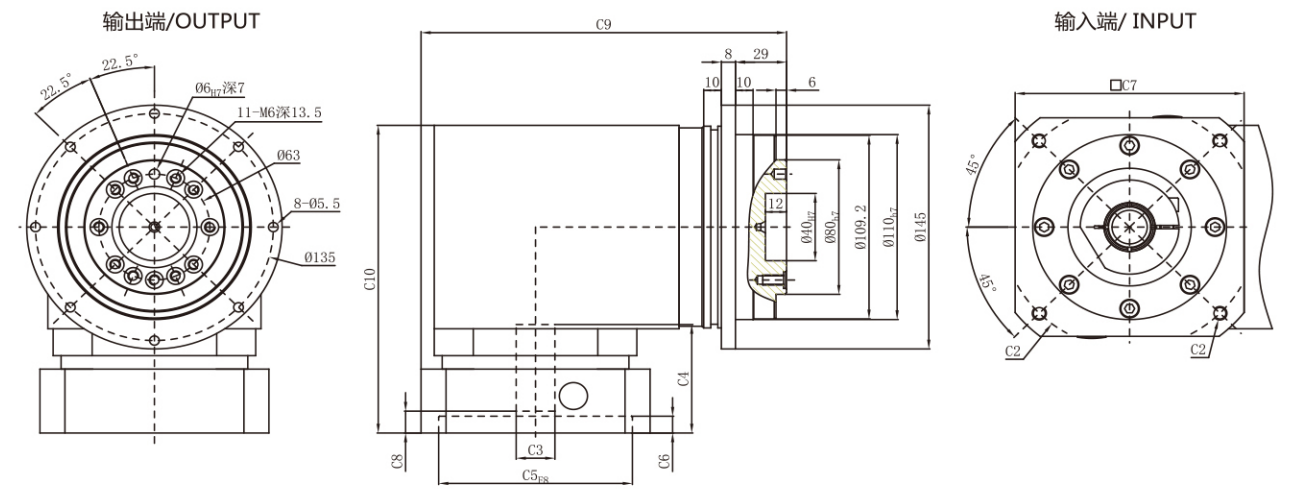


尺寸	C1	C2	C3	C4	C5	C6	C7	C8	C9	C10
PGFR090-L1	φ 70	4-M4x10,4-M5x12	≦ φ 14	47	φ 50	4	90	6.5	158.5	145.5
	φ 75	4-M4x12,4-M5x12	≦ φ 14	47	φ 60	5.5	90	6.5	158.5	145.5
	φ 90	4-M5x15,4-M6x15	≦ φ 19	47	φ 70	7	90	7.5	158.5	145.5
	φ 98.4	4-M5x15,4-M6x15	≦ φ 14	47.5	φ 73	7	90	7.5	158.5	145.5
	φ 100	4-M6x15	≦ φ 19	47.5	φ 80	7	90	12.5	158.5	145.5
PGFR090-L2	φ 115	4-M8x20	≦ φ 24	59	φ 95	10	100	12.5	163.5	157.5
	φ 130	4-M8x20	≦ φ 24	59	φ 95	10	115	12.5	171	157.5
	φ 145	4-M8x20	≦ φ 24	59	φ 110	10	130	12.5	178.5	157.5
	φ 145	4-M8x20	≦ φ 24	68	φ 110	10	130	21.5	178.5	166.5
	φ 70	4-M4x10,4-M5x12	≦ φ 14	32	φ 50	5	60	6	153.5	122.5
PGFR090-L2	φ 75	4-M4x12,4-M5x12	≦ φ 14	32	φ 60	5	66	6	156.5	122.5
	φ 90	4-M5x15,4-M6x15	≦ φ 19	47	φ 70	7	90	7.5	192	145.5
	φ 98.4	4-M5x15,4-M6x15	≦ φ 14	47.5	φ 73	7	90	7.5	192	145.5
	φ 100	4-M6x15	≦ φ 19	47.5	φ 80	7	90	12.5	192	145.5
	φ 115	4-M8x20	≦ φ 24	59	φ 95	10	100	12.5	197	157.5
PGFR090-L2	φ 130	4-M8x20	≦ φ 24	59	φ 95	10	115	12.5	204.5	157.5
	φ 145	4-M8x20	≦ φ 24	59	φ 110	10	130	12.5	212	157.5
	φ 145	4-M8x20	≦ φ 24	68	φ 110	10	130	21.5	212	166.5

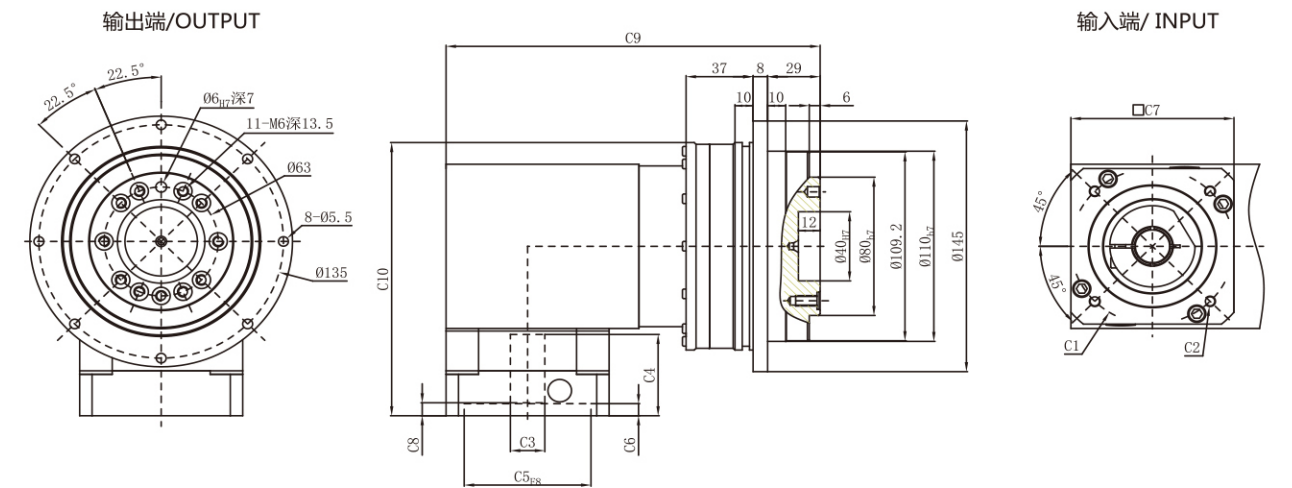
\* C1~C10是公制标准马达连接板之尺寸,可根据客户要求单独定做。  
\* C1~C10 are motor (metric standard) specific dimensions, which could be customised.

外形尺寸图表 / OUTLINE DIMENSION SHEET

PGFR 110-L1



PGFR 110-L2

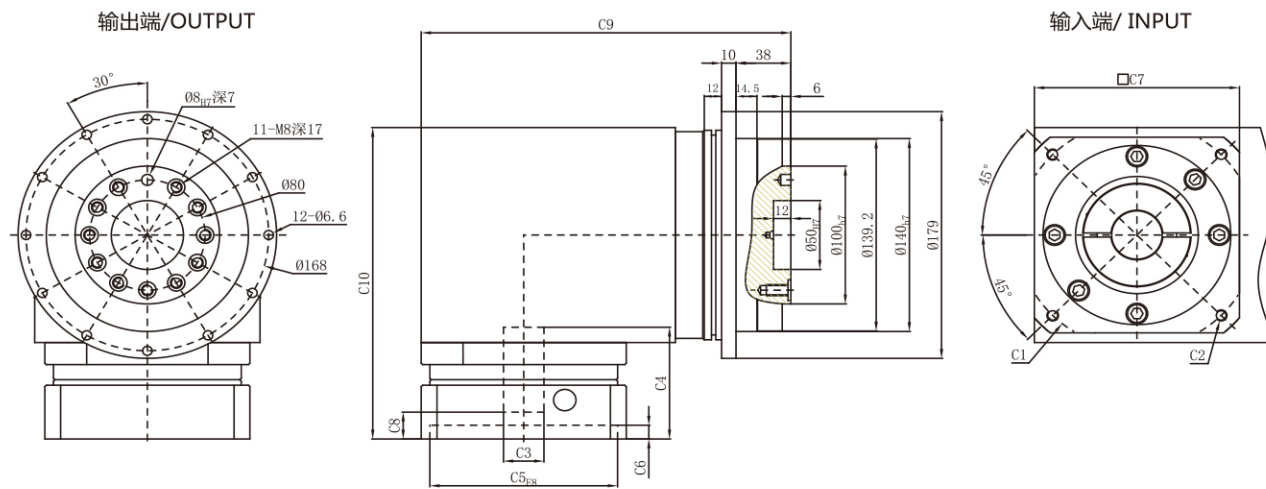


尺寸	C1	C2	C3	C4	C5	C6	C7	C8	C9	C10
PGFR110-L1	φ 90	4-M5x15,4-M6x15	≦ φ 19	62	φ 70	7	115	12	200	183
	φ 100	4-M6x15	≦ φ 19	62	φ 80	7	115	12	200	183
	φ 115	4-M8x20	≦ φ 24	62	φ 95	10	115	13	200	183
	φ 145	4-M8x20	≦ φ 24	62	φ 110	10	130	13	207.5	183
PGFR110-L2	φ 145	4-M8x20	≦ φ 24	71	φ 110	10	130	13	207.5	192
	φ 90	4-M5x15,4-M6x15	≦ φ 19	47	φ 70	7	90	7.5	206.5	158
	φ 100	4-M6x15	≦ φ 19	47	φ 80	7	90	7.5	206.5	158
	φ 115	4-M8x20	≦ φ 24	59	φ 95	10	115	12.5	219	170
PGFR110-L2	φ 145	4-M8x20	≦ φ 24	59	φ 110	10	130	12.5	226.5	170
	φ 145	4-M8x20	≦ φ 24	68	φ 110	10	130	21.5	226.5	179

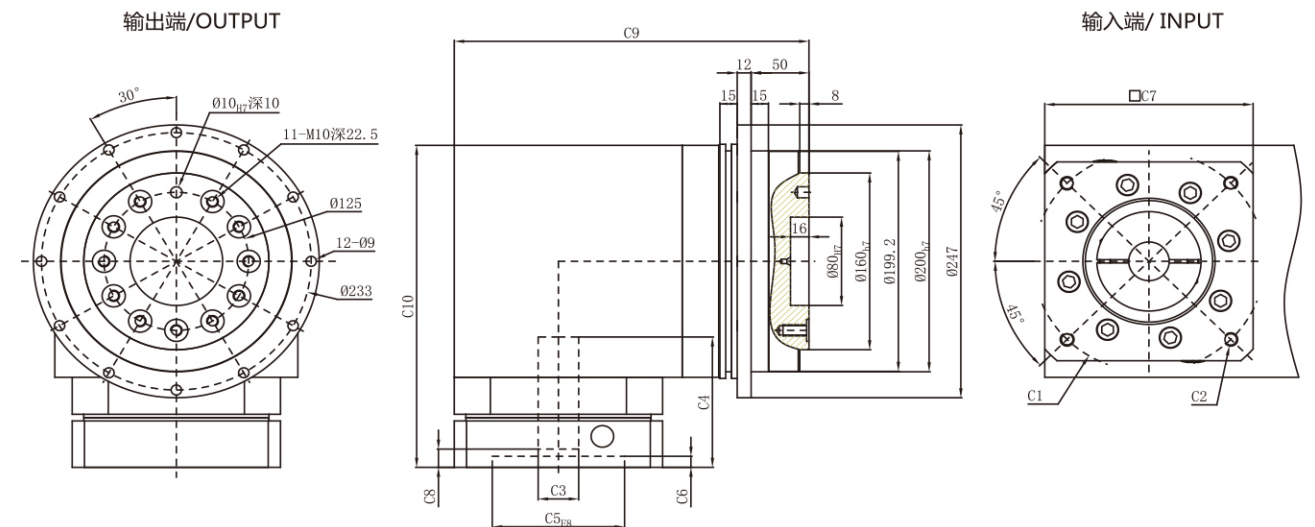
\* C1~C10是公制标准马达连接板之尺寸,可根据客户要求单独定做。  
\* C1~C10 are motor (metric standard) specific dimensions, which could be customised.

外形尺寸图表 / OUTLINE DIMENSION SHEET

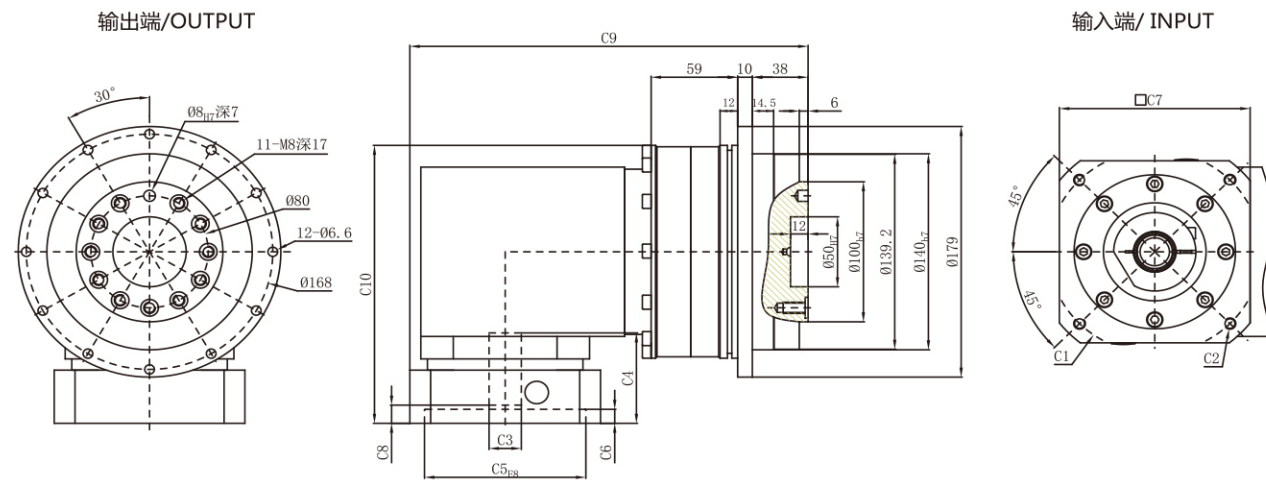
PGFR 140-L1



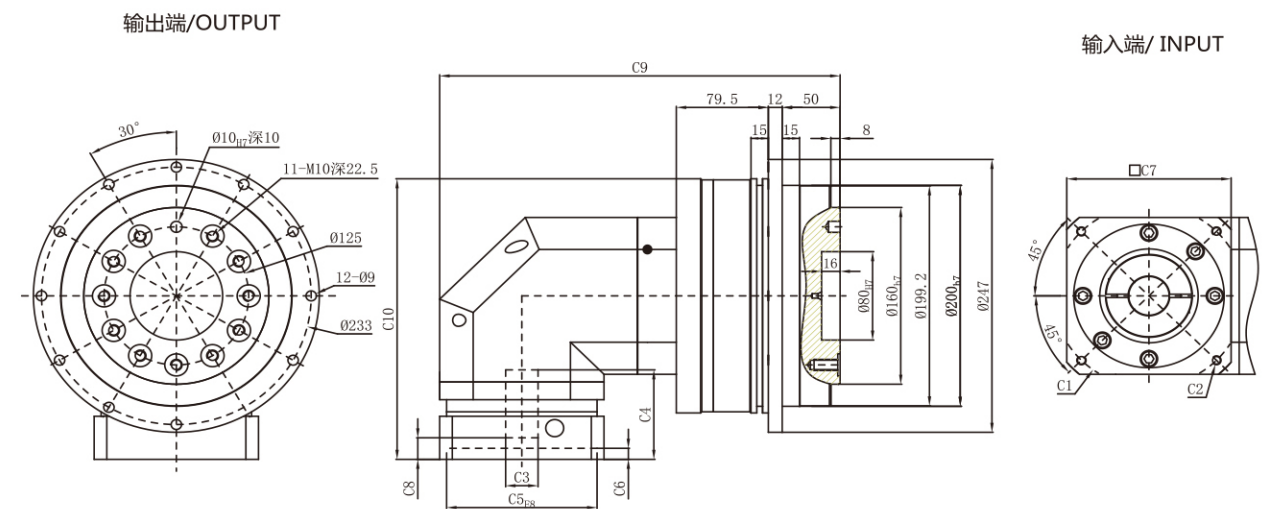
PGFR 200-L1



PGFR 140-L2



PGFR 200-L2



尺寸	C1	C2	C3	C4	C5	C6	C7	C8	C9	C10
PGFR140-L1	φ 145	4-M8x20	≦ φ 28	81	φ 110	10	142	19.5	256	226
	φ 165	4-M10x25, 4-M12x35	≦ φ 32	81	φ 130	10	142	19.5	256	226
	φ 200	4-M12x35	≦ φ 42	83	φ 114.3	8	180	21.5	275	228
	φ 200	4-M12x35	≦ φ 42	115	φ 114.3	8	180	53.5	275	260
PGFR140-L2	φ 145	4-M8x25	≦ φ 24	62	φ 110	10	142	13	271.5	198.5
	φ 165	4-M10x30	≦ φ 28	62	φ 130	10	142	13	271.5	198.5

\* C1~C10是公制标准马达连接板之尺寸,可根据客户要求单独定做。  
\* C1~C10 are motor (metric standard) specific dimensions, which could be customised.

尺寸	C1	C2	C3	C4	C5	C6	C7	C8	C9	C10
PGFR 200-L1	φ 165	4-M10x25, 4-M12x35	≦ φ 32	118	φ 130	10	180	16.5	306.5	291.5
	φ 200	4-M12x35	≦ φ 42	118	φ 114.3	10	180	16.5	306.5	291.5
	φ 215	4-M14x35	≦ φ 42	118	φ 180	10	190	16.5	311.5	291.5
PGFR 200-L2	φ 235	4-M10x30, 4-M14x35	≦ φ 55	150	φ 200	10	220	48.5	326.5	323.5
	φ 130	4-M8x20	≦ φ 24	81	φ 110	10	142	19.5	346	254
	φ 145	4-M8x20	≦ φ 24	81	φ 110	10	142	19.5	346	254
	φ 165	4-M10x25, 4-M12x35	≦ φ 32	81	φ 130	10	142	19.5	346	254
	φ 200	4-M12x35	≦ φ 42	83	φ 114.3	8	180	21.5	365	256
	φ 200	4-M10x25, 4-M12x35	≦ φ 42	115	φ 114.3	8	180	53.5	365	288
	φ 215	4-M14x35	≦ φ 42	83	φ 180	8	190	21.5	370	256

\* C1~C10是公制标准马达连接板之尺寸,可根据客户要求单独定做。  
\* C1~C10 are motor (metric standard) specific dimensions, which could be customised.